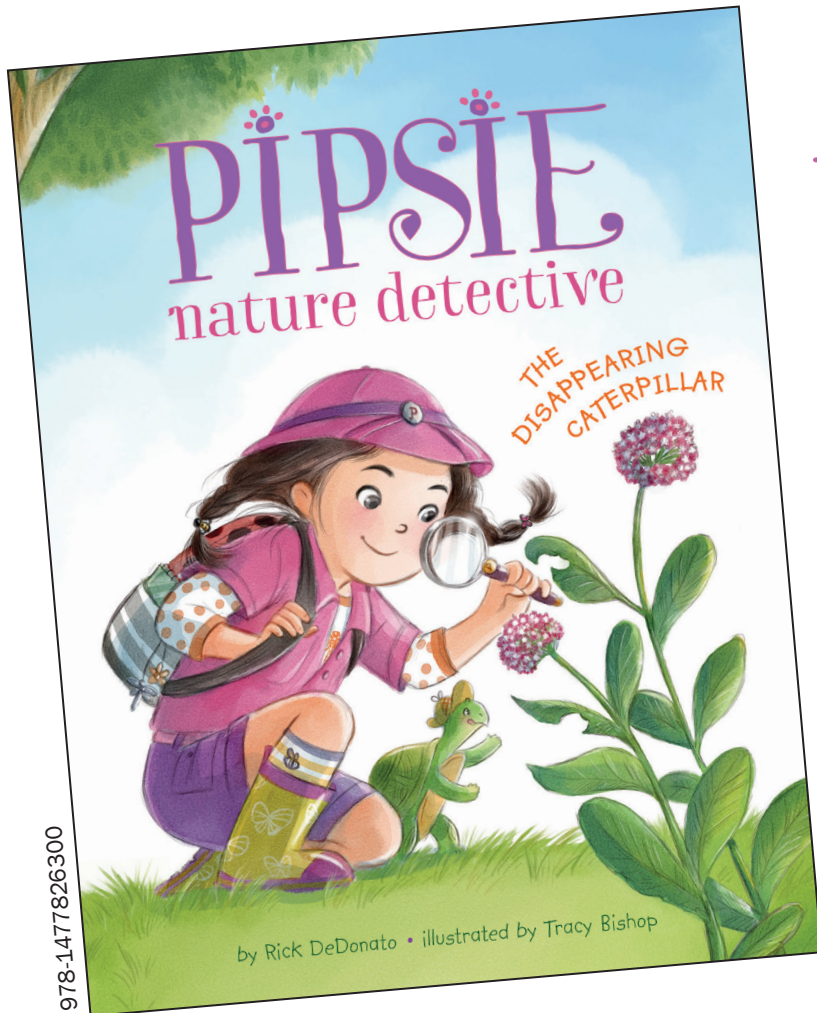


# ACTIVITY KIT

---

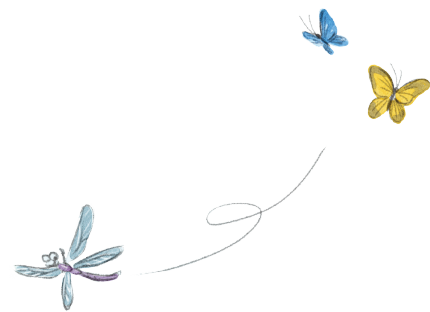


## PIPSIE nature detective

THE DISAPPEARING CATERPILLAR

Written by Rick DeDonato

Illustrated by Tracy Bishop



**P**IPSIE LOVES EVERYTHING WILD—from dragonflies to oceans to tall, tall trees. She also loves solving mysteries. That's why she's a nature detective! When she and her turtle, Alfred, notice that their new friend Frannie the caterpillar has vanished, Pipsie is on the case. She grabs her magnifying glass, goes to her treehouse headquarters, and begins to search for clues.

Kids will love learning about science when Pipsie's on a case! Use the activities in this kit to engage young nature detectives in discovering the wonders of our natural world.



Continue the fun at [www.PipsieNatureDetective.com!](http://www.PipsieNatureDetective.com!)

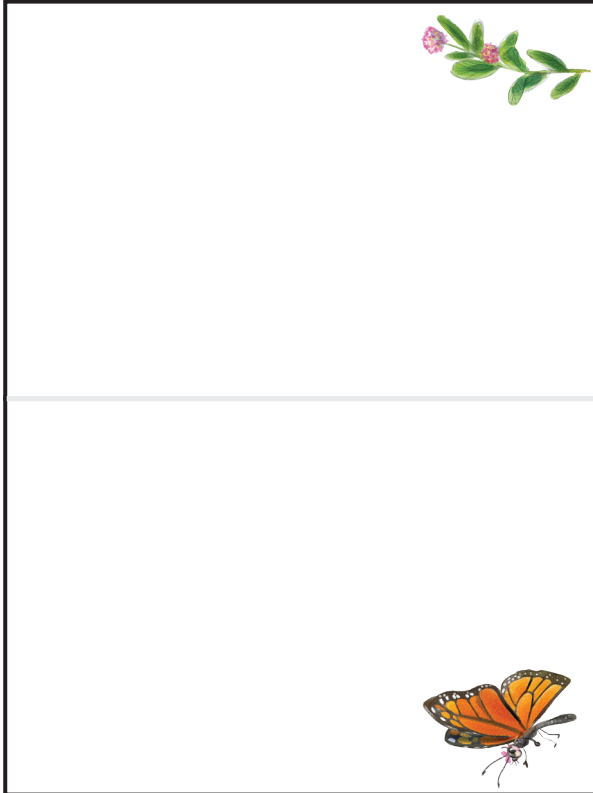
---

# My Nature Notebook .....

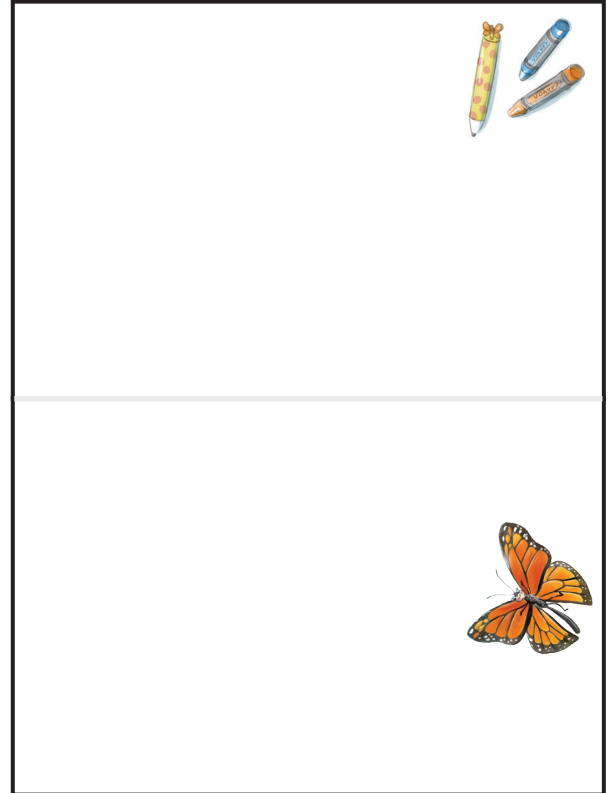
Pipsie has a nature notebook where she can jot down interesting nature facts and keep track of clues. Make your own nature notebook! Sketch flowers and trees and identify them. Can you find a caterpillar like Frannie to draw?

Cut out the rectangles below and stack the pages with the cover on top. Staple along the center line to bind into a mini notebook.

2



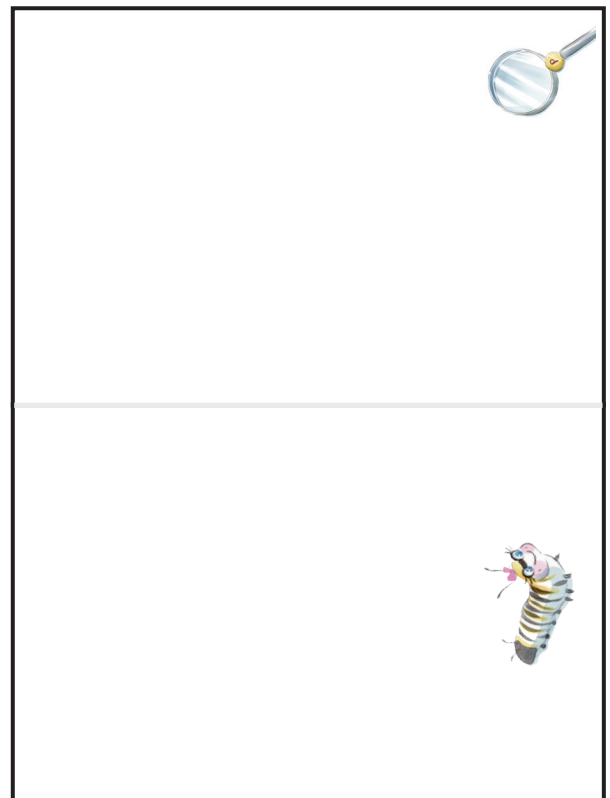
4



1



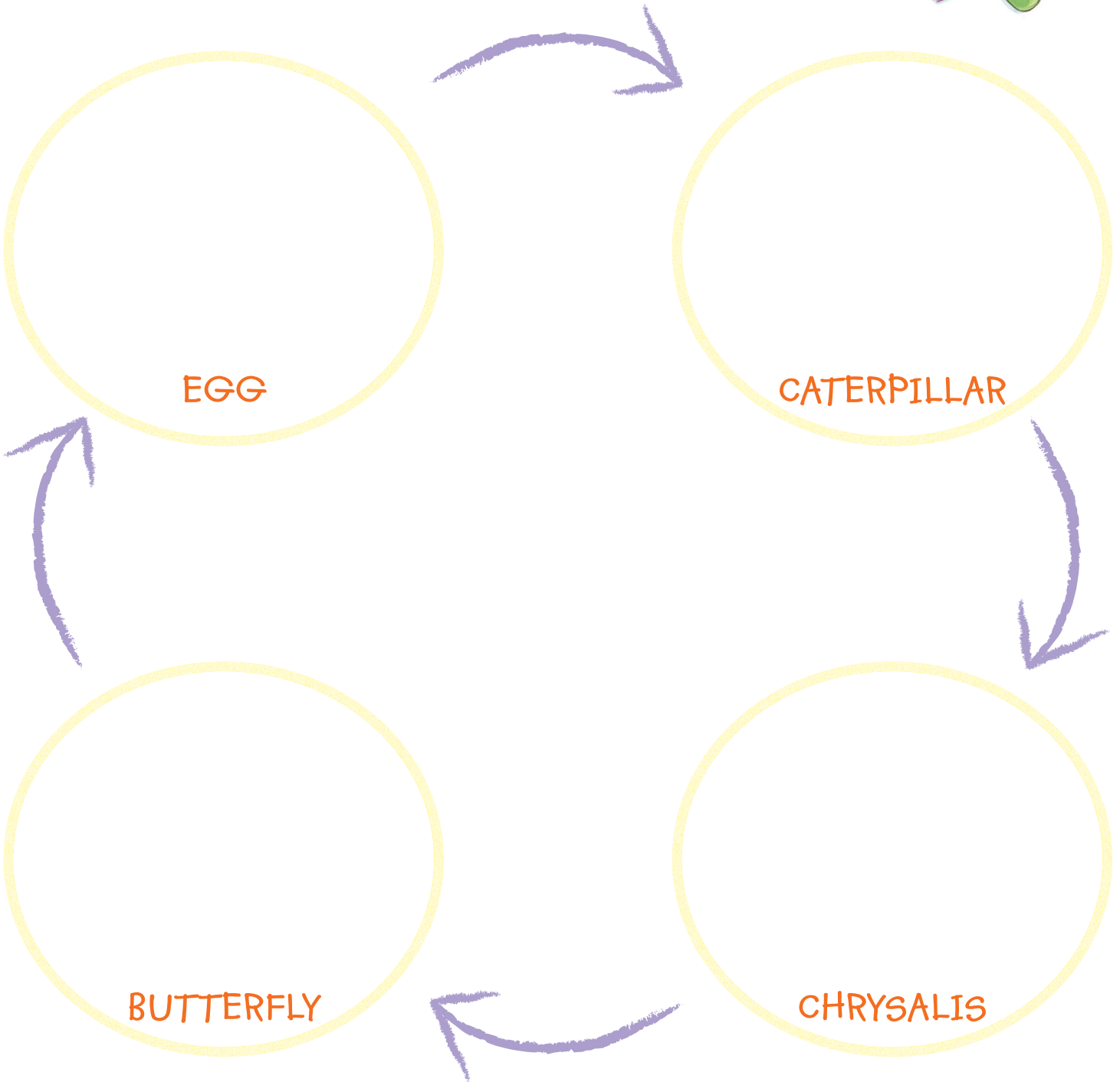
3



# Butterfly Life Cycle

Pipsie and Alfred learn all about Frannie's transformation from a caterpillar to a beautiful butterfly. Can you draw pictures of the different stages in Frannie's life cycle?

.....



# Maze

When Frannie goes missing, Pipsie and Alfred put on their nature detective hats and search for clues. The man at the zoo explains that Frannie has turned into a chrysalis and will soon transform into a butterfly. Can you help Pipsie and Alfred find Frannie's chrysalis and then lead them to the new Frannie?



# Monarch Butterfly Fun Facts

Cut out the Fun Fact cards below and amaze your friends with all you know about butterflies!



In only two weeks, a baby monarch caterpillar grows several thousand times its size.

PIPSIE'S Monarch Fun Fact



The female butterfly is larger than the male butterfly.

PIPSIE'S Monarch Fun Fact



Most caterpillars eat a variety of plant leaves, but monarch caterpillars eat only milkweed leaves to grow.

PIPSIE'S Monarch Fun Fact



Milkweed can be poisonous to other insects and birds, but not to monarchs.

PIPSIE'S Monarch Fun Fact



Eating milkweed protects monarchs. It makes them taste bad to birds!

PIPSIE'S Monarch Fun Fact



Caterpillars love to eat! They'll even eat the shell they hatch from.

PIPSIE'S Monarch Fun Fact

Caterpillars grow so fast that their skin gets too tight. They shed their skin five times so they can keep growing.



PIPSIE'S Monarch Fun Fact

Butterflies taste with their feet. When they land on a flower, they can tell it if it will be good to eat.



PIPSIE'S Monarch Fun Fact

Insect insight by Jess King, entomologist





# Bookmark



## Badge

Cut out this badge and tape a loop of yarn to the back side so you can wear it. Or cut it out and tape it to your notebook, cap, or lunch box!

